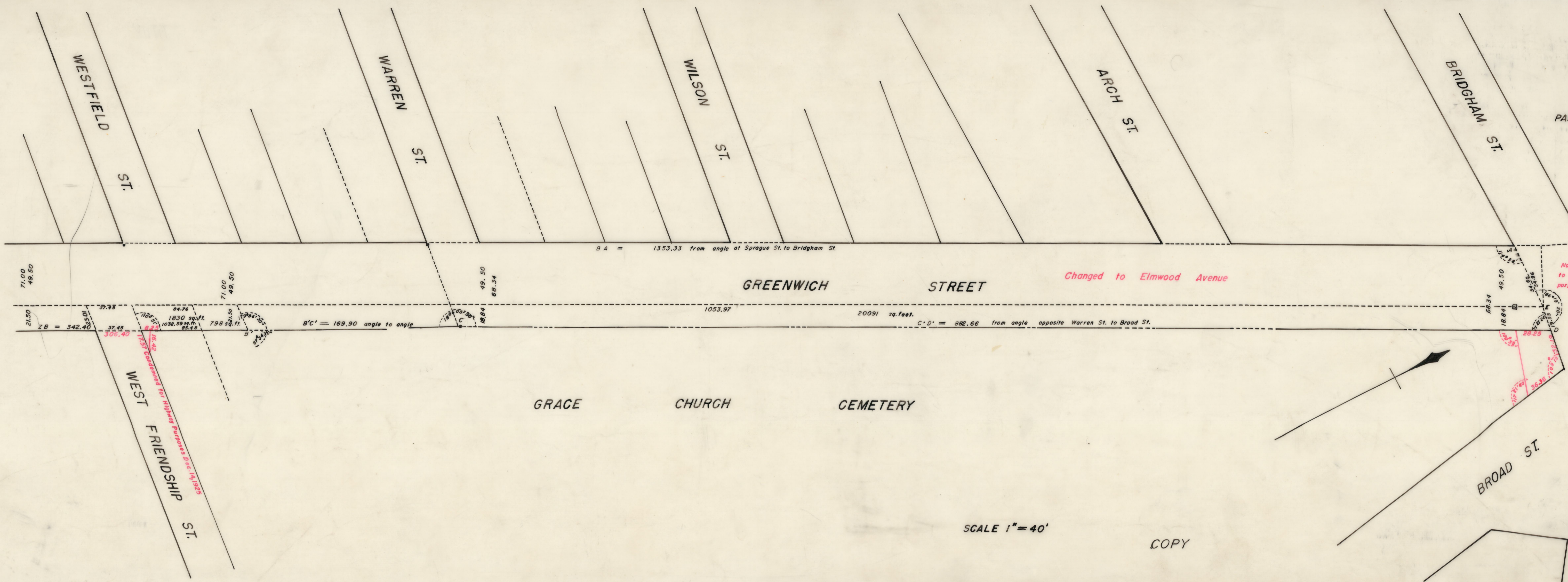


PROVIDENCE R. I.
P. U. DEPT. - ENGINEERING - C. 175
STREET LINE SECTION
Plan No. 063222
Date SEPT. 3, 1968

PARTIAL PLAN OF 016111



Notes in red show land conveyed to the City of Providence for highway purposes. See Ord. of Board 388-411 see also Resolution 632 City Council passed Sept 30, 1891

SCALE 1" = 40'
COPY

OFFICE NO. 10385
DRAWER 95
SHEET B-38